

## 定位销 DCPD40... Locator device DCPD40...

### 主要特点:

- 铝制壳体
- 定位角度高
- 1 个安装面
- 两个扁平氮活塞杆
- 铝制导套
- 活塞杆行程: 20, 40 mm
- 一体化气缸缸径 40 mm
- 3 个 G1/8"气源接口
- P+F 电感式接近开关 (M12x1 接口)



### Main characteristics:

- Aluminum body
- High accuracy of positioning
- 1 mounting area
- Double nitrided plate rods
- Bronze guiding bush
- Rod stroke: 20, 40 mm
- Integrated pneumatic cylinder bore 40 mm
- 3 feeding ports G1/8"
- Inductive proximity switch P+F (connection M12x1)



[PDF](#)



[3D Step](#)



[Index](#)

### 索引

### Index.

页码 Page	描述 Description	
1	主要特点 Main characteristics	
2	订货举例 Ordering example	
3	尺寸页码 Dimensional page	DCPD40W-AN...
4		DCPD40W-BN...
5		DCPD40.2-AN...
6		DCPD40.2- BN...
7	特性/ 电感式接近开关图表 Properties / Diagram for inductive proximity switch	
7	气路图 Pneumatic plan	
8	备件 / Spare parts 备注 / Notes	

订货举例.

## Ordering example.

**DCPD40W - AN - 06 - 40 - IR**

**型号和气缸缸径:**  
**Type and cylinder bore:**

**DCPD40W**  
双导杆定位销  
带安装面 55 mm  
气缸缸径 40 mm  
double locator with 55 mm  
mounting area  
and pneumatic cylinder bore 40  
mm

**DCPD40.2**  
双导杆定位销  
带安装面 40 mm  
气缸缸径 40 mm  
double locator with  
40 mm mounting area  
and pneumatic cylinder bore  
40 mm



**活塞杆位置:**  
**Rod Position:**

06	12
----	----

**行程:**  
**Stroke:**

20	20 mm
40	40 mm

**活塞杆类型:**  
**Rod type:**

**AN:** 扁平氮化活塞杆带两个定位销孔  
nitrided plate rod with 2 dowel holes

**BN:** 扁平氮化活塞杆带一个定位销孔  
nitrided plate rod with 1 dowel hole



**接近开关:**  
**Proximity switch:**

**X:** 无接近开关  
without proximity switch

**IL:** P+F 电感式接近开关, 安装在左侧  
inductive proximity switch P+F mounted on the left side

**IR:** P+F 电感式接近开关, 安装在右侧  
inductive proximity switch P+F mounted on the right side

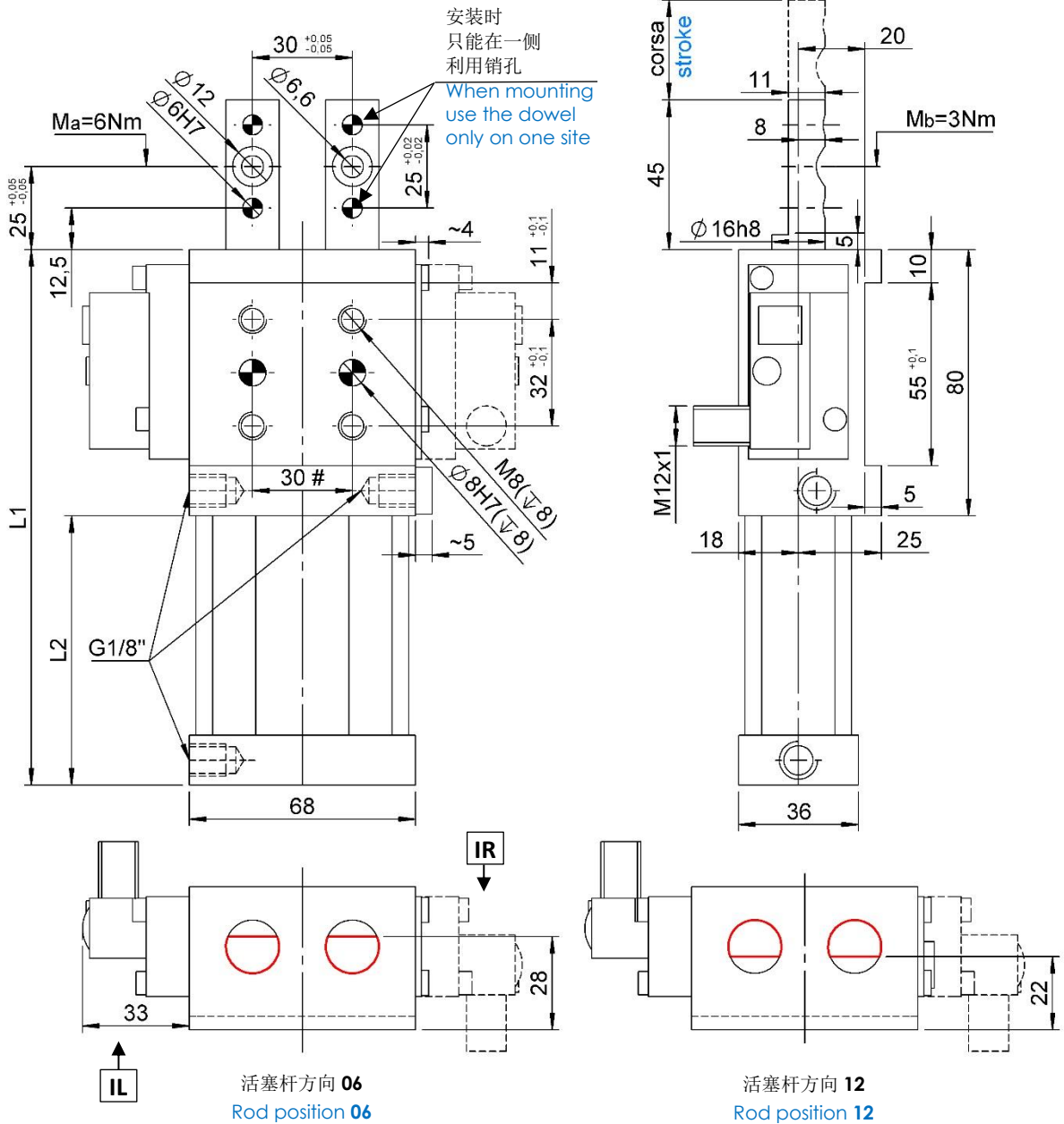
**备注.:** 电源接口位置和电感式接近开关在同一方向  
**NOTE:** the feeding ports are always on the same side of the proximity switch





## DCPD40W-AN...

定位销, D.40, 双导杆, 行程 20/40mm, 2 个定位销孔, 固定安装面 55mm  
 Locator dev., D.40, double rod, 20/40mm, 2 dowel holes, fix. 55mm



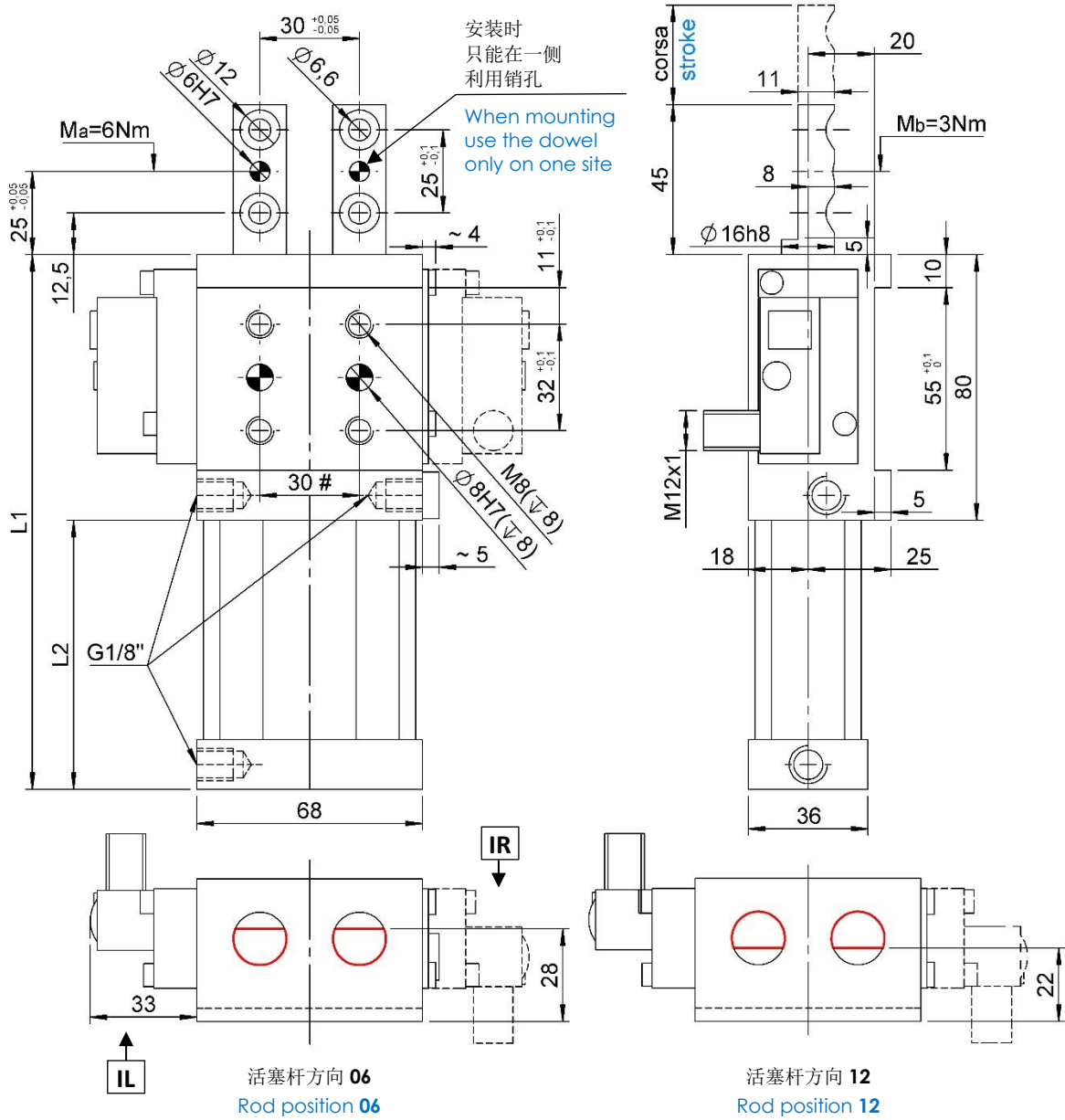
#公差: 定位销孔 ±0.02, 螺纹孔 ±0.1  
 #Tolerances: dowel holes ±0.02, screw holes ±0.1

类型 Type	气缸缸径 Cylinder bore	活塞杆类型 Rod stroke	L1	L2	重量 Weight	耗气量(5 bar) Air consumption (5 bar)
	[ mm ]	[ mm ]	[ mm ]	[ mm ]	[ Kg ]	[ l ]
DCPD40WAN-20I...	40	20	141	61	~1,1	~ 0,3
DCPD40WAN-40I...		40	161	81	~1,2	~ 0,5



## DCPD40W-BN...

定位销, D. 40, 双导杆, 行程 20/40 mm, 1 个定位销孔, 固定安装面 55mm  
 Locator dev., D.40, double rod, 20/40mm, 1 dowel hole, fix. 55mm



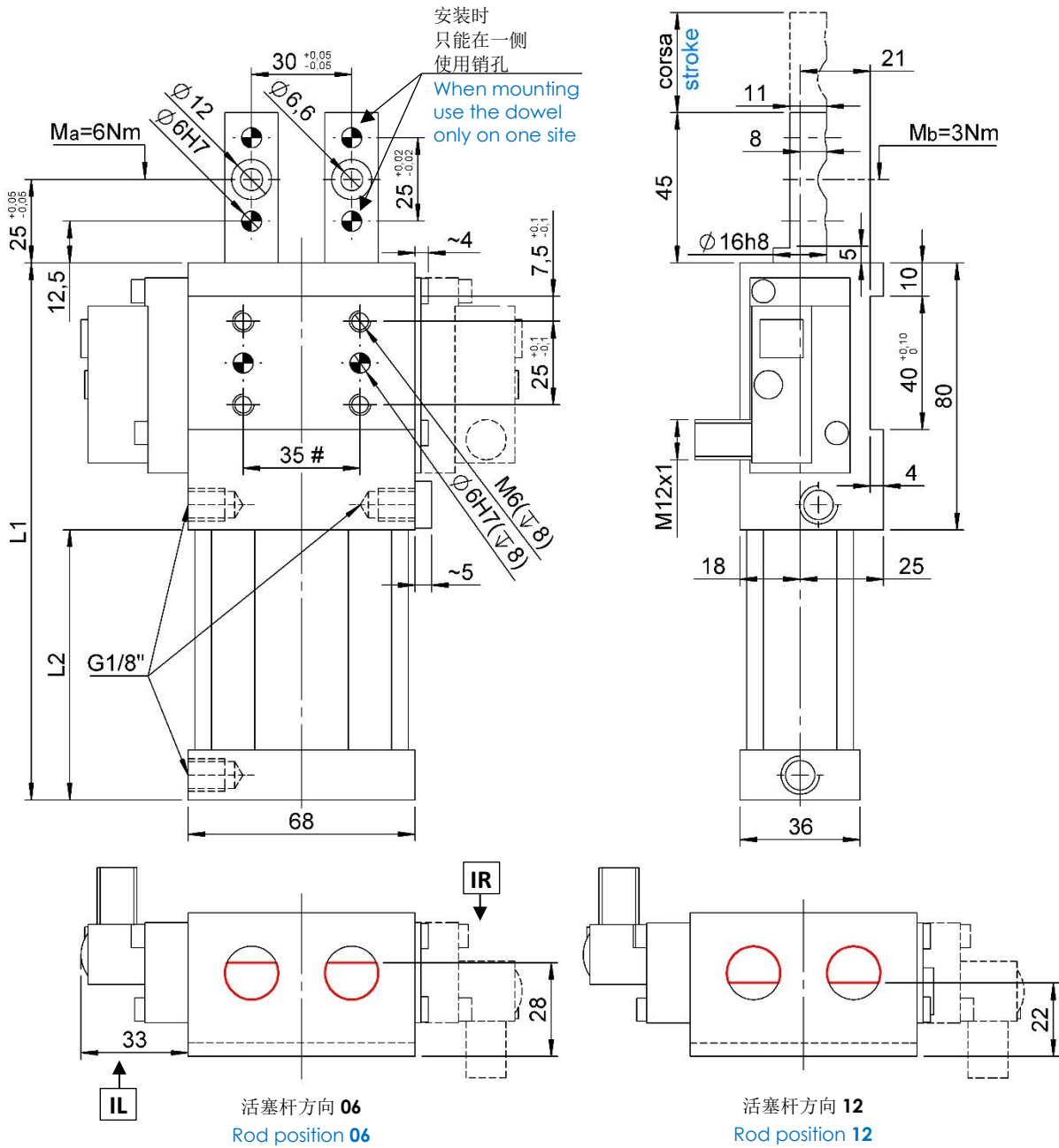
#公差: 定位销孔  $\pm 0.02$ , 螺纹孔  $\pm 0.1$   
 #Tolerances: dowel holes  $\pm 0.02$ , screw holes  $\pm 0.1$

类型 Type	气缸缸径 Cylinder bore	活塞杆行程 Rod stroke	L1	L2	重量 Weight	耗气量(5 bar) Air consumption (5 bar)
	[ mm ]	[ mm ]	[ mm ]	[ mm ]	[ Kg ]	[ l ]
DCPD40WBN-20I...	40	20	141	61	~1,1	~ 0,3
DCPD40WBN-40I...		40	161	81	~1,2	~ 0,5



## DCPD40.2-AN...

定位销, D.40, 双导杆, 行程 20/40mm, 2 个定位销孔, 固定安装面 40mm  
 Locator dev., D.40, double rod, 20/40mm, 2 dowel holes, fix. 40mm



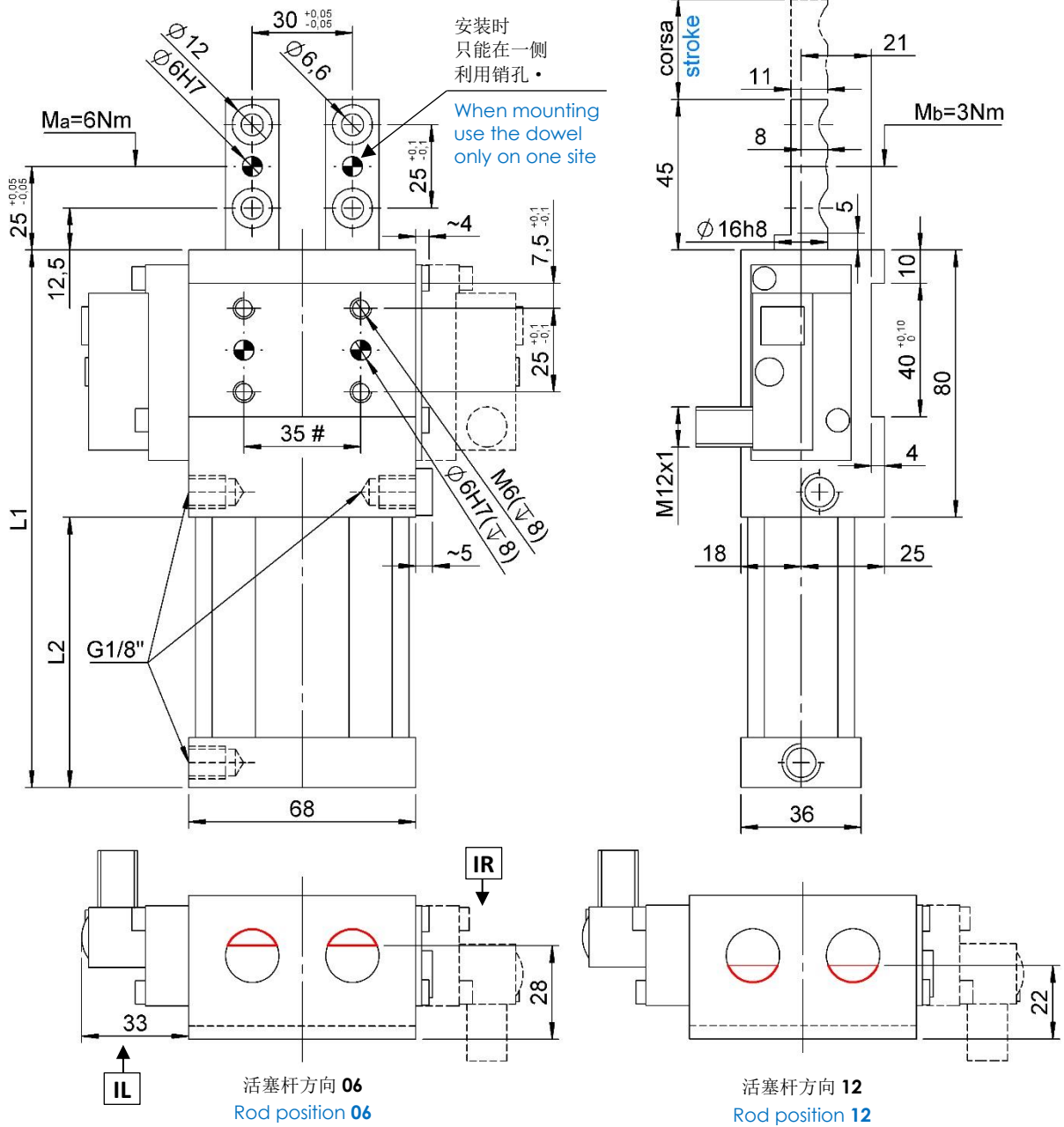
#公差: 定位销孔 ±0.02, 螺纹孔 ±0.1  
 #Tolerances: dowel holes ±0.02, screw holes ±0.1

类型 Type	气缸缸径 Cylinder bore	活塞杆行程 Rod stroke	L1	L2	重量 Weight	耗气量(5 bar) Air consumption (5 bar)
	[ mm ]	[ mm ]	[ mm ]	[ mm ]	[ Kg ]	[ l ]
DCPD40.2AN-20I...	40	20	141	61	~1,1	~ 0,3
DCPD40.2AN-40I...		40	161	81	~1,2	~ 0,5



## DCPD40.2 BN...

定位销, D. 40, 双导杆, 行程 20/40 mm, 1 个定位销孔, 固定安装面 40mm  
 Locator dev., D.40, double rod, 20/40mm, 1 dowel hole, fix. 40mm



#公差: 定位销孔  $\pm 0.02$ , 螺纹孔  $\pm 0.1$   
 #Tolerances: dowel holes  $\pm 0.02$ , screw holes  $\pm 0.1$

类型 Type	气缸缸径 Cylinder bore	活塞杆行程 Rod stroke	L1	L2	重量 Weight	耗气量(5 bar) Air consumption (5 bar)
	[ mm ]	[ mm ]	[ mm ]	[ mm ]	[ Kg ]	[ l ]
DCPD40.2BN-20I...	40	20	141	61	~1,1	~ 0,3
DCPD40.2BN-40I...		40	161	81	~1,2	~ 0,5



## 特性.

### Properties.

推进力 Pressing force (5 bar)	牵引力 Tensile force (5 bar)	最大静态径向力 Static side force max.	最大 <b>Ma</b> 横向扭矩力 Max. <b>Ma</b> torque	最大 <b>Mb</b> 直向扭矩力 Max. <b>Mb</b> torque
[ N ]	[ N ]	[ N ]	[ Nm ]	[ Nm ]
600	500	80	6	3

## 电感式接近开关原理图 (cod. 09576/行程/C).

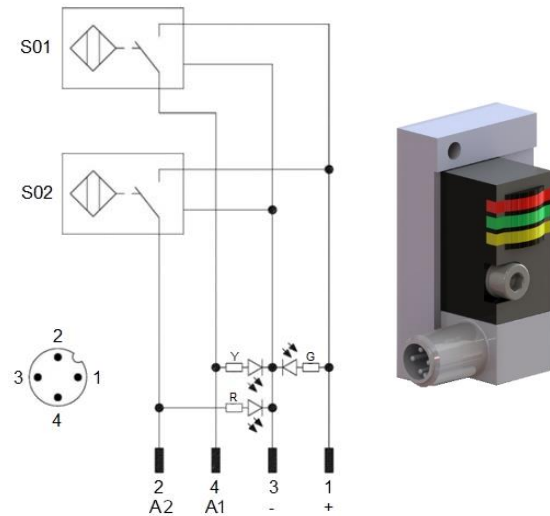
### Diagram for Inductive proximity switch (cod. 09576/stroke/C).

(P+F) 技术参数:

- 输出类型: PNP;
- 输入电压: 10-30 VDC;
- 最大换向电流: 200 mA;
- 消耗电流: < 25 mA;
- 电压差: < 2 V
- 温度范围: -25° / 70° C.

Technical data (P+F):

- Output type: PNP;
- Feeding voltage: 10-30 VDC;
- Max. commutating current: 200 mA;
- Power supply: < 25 mA;
- Voltage drop: < 2 V;
- Temperature range: -25° / 70° C.



S01 = 打开信号

S01 = opening signal

S02 = 夹紧信号

S02 = closing signal

Y = 黄色 LED / yellow LED

G = 绿色 LED / green LED

R = 红色 LED / red LED

1 = 棕色系 / brown wire

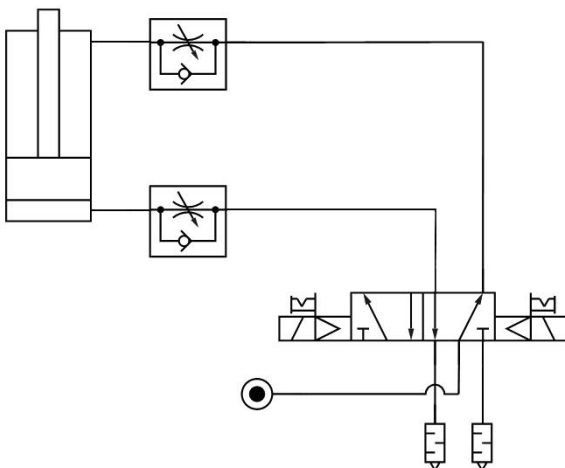
2 = 黑色线 / black wire

3 = 蓝色线 / blue wire

4 = 白色线 / white wire

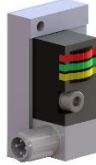

## 气路图.

### Pneumatic plant.



类型 Type	耗气量 Air consumption (5 bar)	耗气量 Air consumption (6 bar)	工作气压 Working pressure
	[ l ]	[ l ]	[ bar ]
DCPD40W...-20l...	~ 0,3	~ 0,35	2 - 8
DCPD40.2...-20l...			
DCPD40W...-40l...	~ 0,5	~ 0,6	
DCPD40.2...-40l...			

**备件****Spare parts**

配套元件 # Kit	图片 Picture	描述 Description	代号 Article
接近开关 Proximity switch		P+F电感式接近开关 Inductive proximity switch P+F	09576/行程/C 09576/stroke/C
密封套装 Seals kit		气缸密封组件 Pneumatic cylinder seals	SCR-DCPD40W

本目录取消并替换了以前的目录。我们保留在没有任何通知的情况下进行添加或更改的权利。目录中的产品为标准产品；对特殊应用的任何请求都由技术/商务部门进行评估。本目录文档均属 VEP Automation S.r.l 所有。未经授权许可，禁止任何形式的复制。

This catalogue cancels and replaces the previous ones. We reserve the right to make additions or changes without any notice. The products in the catalogue are standard; any enquiry of special applications is evaluated by technical/sales department. The complete documentation belongs to VEP Automation S.r.l. and without permission any kind of reproduction is forbidden.

**VEP Automation Headquarters****VEP Automation S.r.l**

Via San Felice, 37  
10092 Beinasco – Torino (Italy)  
Tel. +39 011 3972572  
Email: [info@vepautomation.it](mailto:info@vepautomation.it)  
Web: [www.vepautomation.it](http://www.vepautomation.it)

**VEP Automation Germany****VEP Automation GmbH**

Fritz Liebsch Str. 29  
D 26723 Emden (Germany)  
Tel. +49 04921 450758  
Email: [info@vepautomation.de](mailto:info@vepautomation.de)  
Web: [www.vepautomation.de](http://www.vepautomation.de)

**VEP Automation America****VEP Automation S.A. de C.V.**

Av. Toluca 373 M Col. Olivar de los  
Padres Del. Álvaro Obregón  
01780 CDMX – (Ciudad de México)  
Tel. +52 55 1718 0929  
Email: [info@vepautomation.mx](mailto:info@vepautomation.mx)  
Web: [www.vepautomation.mx](http://www.vepautomation.mx)

**VEP Automation China****维亿普自动化（苏州）有限公司**

地址：中国江苏省苏州市吴中区木渎镇  
木东路 317 号（联东 U 谷）1 幢 401 室  
Room 401, Building No 1, No 317, mudong Road,  
Wuzhong, mudu District, Suzhou City (China)  
电话: +86 512 6729 2226  
邮箱: [info@vepautomation.cn](mailto:info@vepautomation.cn)  
网址: [www.vepautomation.cn](http://www.vepautomation.cn)